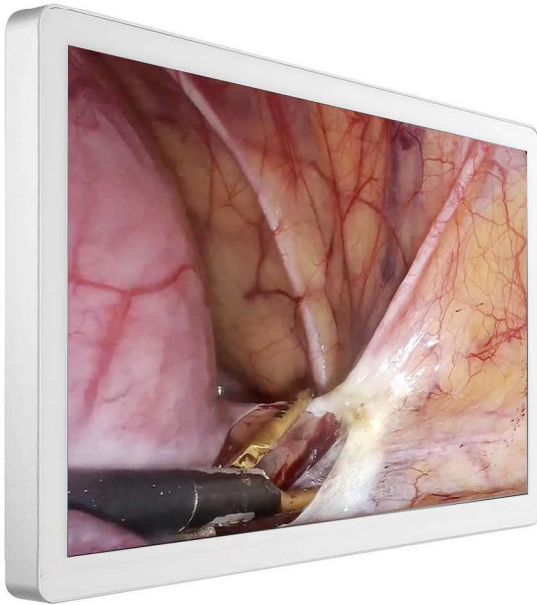




22 inch Full HD IPS
Surgical Monitor

ESC[®]
MEDICAMS



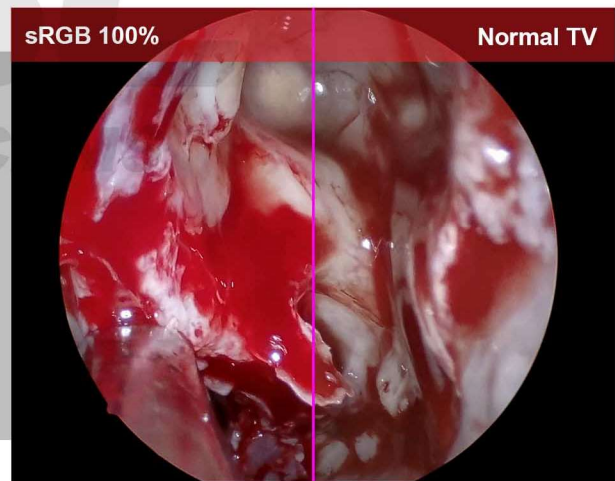
Ultra-Sharp Full HD IPS Display

- 1920 x 1080 resolution for sharp, detailed visuals
- IPS panel ensures wide 178° viewing angles
- Consistent color accuracy from any angle



100% sRGB Color Gamut

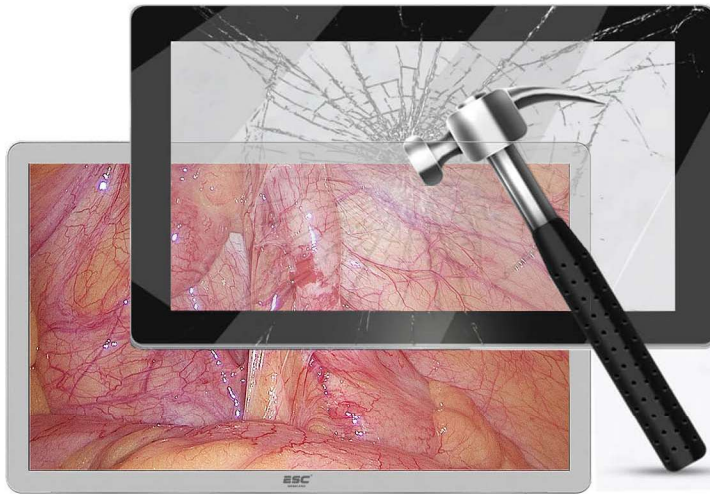
- Accurate and vibrant color reproduction
- Ideal for high-precision medical imaging
- True-to-life visuals with no color distortion



1 Billion Colors HDR10 Support

- High Dynamic Range for enhanced detail in shadows
- Better depth perception for critical procedures
- Improved contrast and color accuracy in every frame





Tempered Protection Glass with Durable Metal Built

- Extra Glass to protect the screen against impacts, scratches, and cleaning agents.
- Robust metal casing Industrial-grade build designed to withstand long-term daily operation.

Vesa Mount on Trolley Arm



Desktop Mount Stand

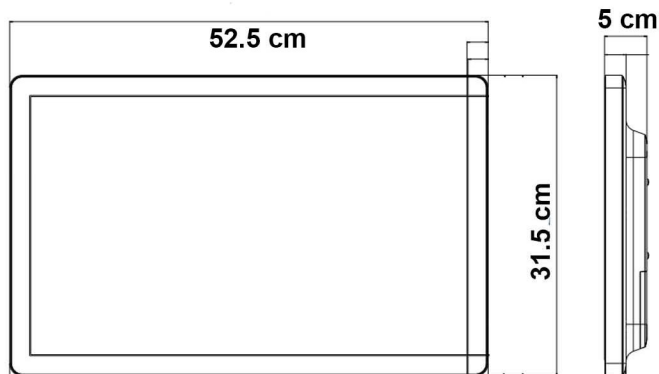


HDMI DVI VGA COMPOSITE POWER



Multiple Interface

- Input : HDMI , DVI , VGA , BNC Composite



Display Size	22 Inches
Resolution	Full HD 1920 x 1080
Panel Type	IPS (In-Plane Switching)
Pixel Pitch	0.3144 mm x 0.3114 mm
Color Gamut	100% sRGB – True Color Accuracy
Brightness	500 cd/m ² – High Visibility in OR Lighting
HDR Support	HDR10 – Enhanced Dynamic Range
Viewing Angle	178° (H/V) – Consistent Clarity from All Angles
Contrast Ratio	1000:1 (Typical)
Response Time	5ms (GTG)
Protection Glass	Chemically Strengthened – Anti-scratch, Shatter-Resistant
Enclosure	Full Metal Housing – Industrial-Grade, Antimicrobial Coated
Water/Dust Resistance	IP65 Front Panel – Waterproof & Dustproof
Backlight	Flicker-Free LED
Connectivity	HDMI, DVI, DisplayPort, VGA (configurable)
Mounting	VESA Compatible – Wall/Arm Mount Ready
Power Input	DC 12 Volt
Max Power Consumption	120W
Menu Control	Remote Control
Dimensions	52.5 cm (W) x 31.5 cm (H) x 5 cm (D)