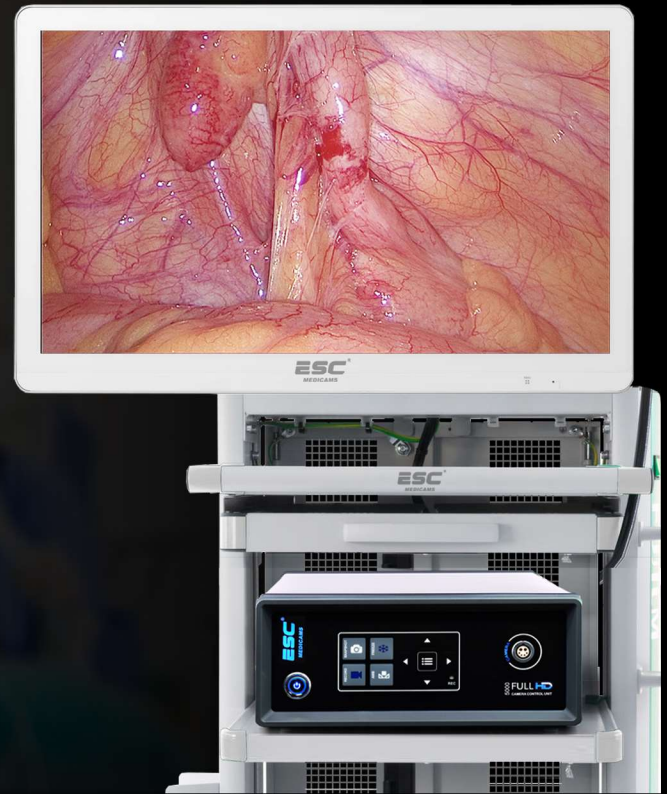


**ESC**<sup>®</sup>  
MEDICAMS



FHD-LP-5000

Let's make it visible



FHD-LP-5000

Full HD 1080p Laparoscopy & Endoscopy Camera System w/ Inbuilt Recorder



Extreme Clarity with Full HD 60 fps Chipset



High Definition Video Recording

Bigger, Wider Sony Exmor Sensor

High Resolution Images, Sharper Details w/ 60 FPS technology to give zero delay videos.

High Definition Video Recording

Inbuilt Medical Recorder with High Speed 64GB USB3.0 Drive to capture Full HD Images and Videos.

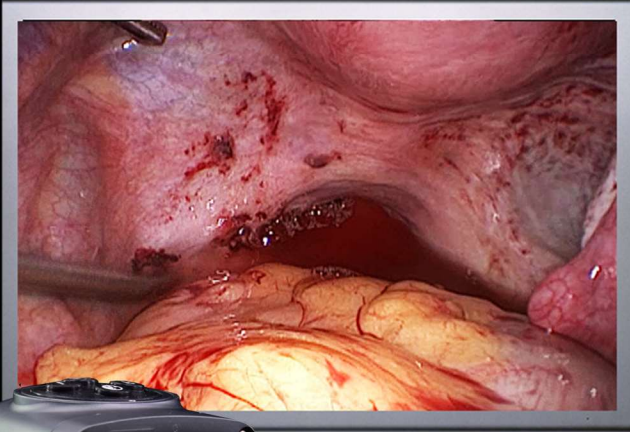
Capture more details in single frame with 40% more pixels and high color depth.

Inbuilt Medical Recorder with High Speed 64GB USB3.0 Drive to capture Full HD Images and Videos.





FHD-LP-5000



## BIGGER SENSOR

### DETAILED IMAGE

Experience superior quality high definition imaging with wider & bigger Sony exmor Sensor with size 1/1.8" allowing more light to enter into camera and producing detailed and sharp images.

## CLICK & RECORD

### FULL HD VIDEOS

Record high definition videos directly into USB drive with Record & Snapshot buttons

## 4K LENS

### ANTI-REFLECTION COATING

Clear waterproof optics designed to adapt with all types of Rigid Endoscope





- Premium Resolution 2.4 Megapixel (1920x1080p)
- Sony 1/1.9" Ex-Mor CMOS Sensor
- Full HD Recording directly into USB Drive
- Snapshot and recording via remote control
- Output : 1 HDMI , 1 SDI
- Low Delay Realtime 60 Fps Smooth imaging
- 5x Zoom Button on Control Unit
- IP8X Waterproof design
- Special medical grade filter on camera sensor
- Low heat emission
- One Press Freeze button on camera head
- High color accuracy with intelligent white balance
- New Anti-reflective coated german glass HD lens
- Premium design light weight camera head



**Anti-Moire**

**Filter**

Reduce the mesh pattern or moire formation in flexible endoscopes by activating Anti-Moire Feature in camera



**5x Powerful**

**Zoom**

Digital 5x Zoom for detailed examination which can be controlled from programmable camera head keys or Control Unit.



**Fully Waterproof**

**Camera Head**

Completely waterproof camera head for applications like Urology



**Auto Anti-Fog for**

**Laparoscopy**

Digital Anti-Fog feature which activates automatically to increase image quality.



# FHD-LP-5000

## SPECIFICATIONS

Model	FHD-LP-5000	
Signal System	PAL	NTSC
Image Sensor	1/1.8" Sony Exmor HDR Sensor	
Total Pixels	2000 (H) x 1241 (V) approx. 2.48M pixels	
Unit Cell Size	3.75 μm (H) x 3.75 μm (V)	
Scanning Frequency	H: 15.625 KHz / V: 50 Hz	H: 15.734 KHz / V: 59.94 Hz
Frame Rate	50 Fps @ 1080p	60 Fps @ 1080p
Sensor Resolution	2.13 Megapixel 1080p	
Effective Pixels	1945 (H) x 1097 (V) approx. 2.13M pixels	
Focal Length of Lens	4k 22mm / 28mm Lens	
Gain Control (AGC)	0 - 10 Steps	
Brightness Control	0 - 20 Steps (Adjust according to light source intensity)	
Output	1 HDMI , 1 3G-SDI , 1 Video BNC Output , 1 DVI ( Optional )	
Input	1 USB Input ( Upto 128 GB Pen Drive ) 1 PC Input ( Windows )	
Recording Resolution	1080p Full HD @ 60 fps	
Snapshot Resolution	1920 x 1080 Pixels	
Digital Zoom	1x- 10x	
Recording Mode	Via USB Pen Drive	
Min. System Requirement for PC	OS : Windows 7,8,10 , Ram : 16 Gb , Intel i5 / i7 , Memory : 512 Gb , Graphics: 2 Gb	
Sharpness	0-10	
Color	0-10	
White Balance	PUSH LOCK	
Camera Cable Length	3 Meters Ultra Soft Silicon Cable	
HDMI Cable Length	3 Meters High Speed Cable	
Power Cable Length	1 Meter	
Supported Endoscope	Rigid Endoscopes / Flexible Endoscope (Optional)	
Supported Light Source	Work best with LED Light Source	
Power Voltage	12VDC (Camera Head) , AC110V-240V (Control Unit)	
Power Consumption	Max. 2W / 170mA	
Operating Temperature	-10°C ~ +50°C	
Operating Humidity	30% ~ 80% RH	
Dimensions	317 (L) x 242(W) x 90 (H) mm. (Control Unit) , Ø 42 mm. x 92 mm. (Camera Head)	
Weight (Net)	Approx. 3225 g. ( Control Unit ) , Approx. 150 g. ( Camera Head without Cable and lens )	