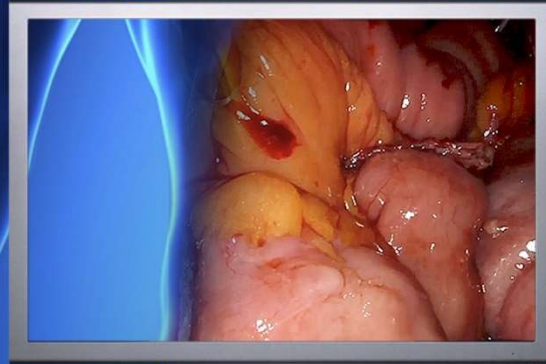
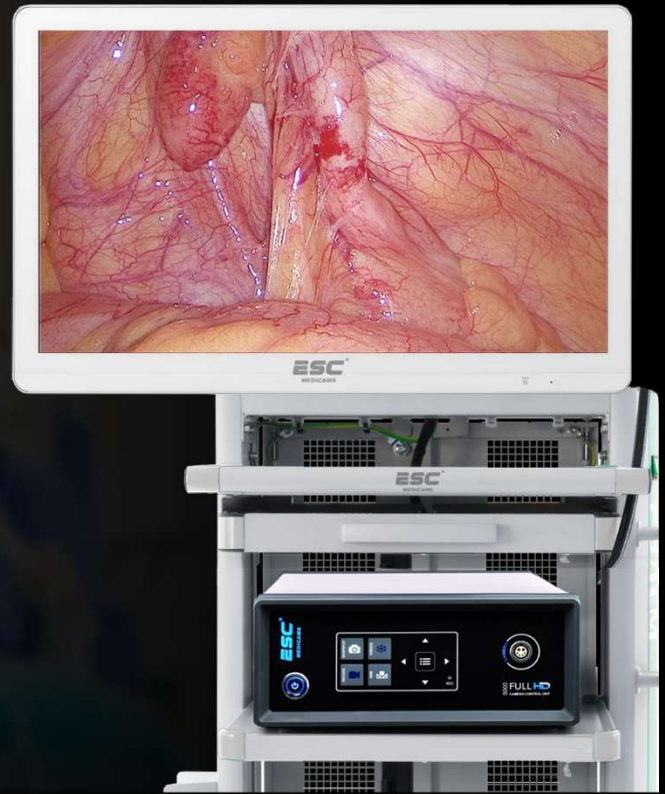


ESC[®]
MEDICAMS



PRODUCT BROCHURE - 2023



FHD-LP-5000

Full HD 1080p Laparoscopy & Endoscopy Camera System w/ Inbuilt Recorder



Extreme Clarity with Full HD 60 fps Chipset



High Definition Video Recording

Bigger, Wider Sony Exmor Sensor

High Resolution Images, Sharper Details w/ 60 FPS technology to give zero delay videos.

High Definition Video Recording

Inbuilt Medical Recorder with High Speed 64GB USB3.0 Drive to capture Full HD Images and Videos.

Capture more details in single frame with 40% more pixels and high color depth.

Inbuilt Medical Recorder with High Speed 64GB USB3.0 Drive to capture Full HD Images and Videos.





- Premium Resolution 2.4 Megapixel (1920x1080p)
- Sony 1/1.9" Ex-Mor CMOS Sensor
- Full HD Recording directly into USB Drive
- Snapshot and recording via remote control
- Output : 1 HDMI , 1 SDI
- Low Delay Realtime 60 Fps Smooth imaging
- 5x Zoom Button on Control Unit
- IP8X Waterproof design
- Special medical grade filter on camera sensor
- Low heat emission
- One Press Freeze button on camera head
- High color accuracy with intelligent white balance
- New Anti-reflective coated german glass HD lens
- Premium design light weight camera head



Anti-Moire

Filter



Auto Anti-Fog for

Laparoscopy

5x Powerful

Zoom

Fully Waterproof

Camera Head

Completely water-proof camera head for applications like Urology

Reduce the mesh pattern or moire formation in flexible endoscopes by activating Anti-Moire Feature in camera

Digital Anti-Fog feature which activates automatically to increase image quality.

Digital 5x Zoom for detailed examination which can be controlled from programmable camera head keys or Control Unit.

Powerful Illumination 120 Watt Cold LED Light Source w/ 3.5" Touchscreen

- Cost Effective LED Technology
- High Power : 120 Watt
- Illumination : > 4,000,000 Lux
- LED Life Span : 50,000 Hours +
- Optimum Color Rendering
- Lightweight and compact design
- Light output suitable for diagnostic & surgery
- Constant Light Intensity over lifetime
- Low Energy consumption
- Dual Fan for Heat Control



Mini 80 Watt Portable Cold LED Light Source

- Cost Effective LED Technology
 - High Power : 80 Watt
 - Illumination : > 2,000,000 Lux
- LED Life Span : 40,000 Hours +
 - Constant Color Temperature
 - Color Rendition Index (CRI) :- 75
- Constant Light Intensity over lifetime
 - Low Energy consumption
- High brightness, Noise-free imaging
- Compact Design : 160*180*80 cm
 - Fan for Efficient Heat Control
 - Input Voltage : AC110~250V



ESC MEDICAMS LAPAROSCOPY CO2 INSUFFLATOR

- 30L Insufflators Precise control of pressure/flow Parameters
- Inbuilt gas warmer provides warm results minimizing fogging
- Over pressure alarm & pressure release systems – help assure patient safety.
 - Continuous flow provides easy procedures
 - Advance high speed microcontroller technology
 - Greater accuracy & measurement of Co2
 - Reduce Nursing attention
 - Automatic overpressure gas release
 - Insufflation Pressure :- 3-25 mm Hg
 - Gas Connection :- UNF 7/16”
 - Input Pressure :- 3 Bar Min.
- Output Connection :- 9 - 10 mm ID Tube
- Flow Rate Setting :- 1 to 30 Ltrs / Min



400 W Electrosurgical Cautery Machine

- 4 Modes in CUT - Pure, Blend1, Blend2, Endocut
- 4 Modes in COAG - Spray, Force, Fulgurate, Desiccate
- 4 Modes in BIPOLAR- Micro, Macro, Cut, Auto-Mode
- Microprocessor controlled Electrosurgical unit
- Pure cut with two additional BLEND 1 & BLEND 2 modes to give a surgeon, varying degree of hemostasis while cutting. Endocut mode is for added flexibility
- Separates Monopolar and Bipolar mode with individual foot-switches
- Bipolar feature- When generator is switched to bipolar mode; all the Monopolar activities associated with hand-switch or foot-switch, are automatically stopped to prevent uncalled burns
- Bipolar provides coagulation without charring, adhesion and blanching of adjacent tissues
- Bode protected and cardiac protected design
- Patient Plate Fault Monitoring system
- Handswitch and Footswitch Operation
- High Frequency - 400W
- Minimum RF Distortion ; User settable program modes
- HF Leakage current > 150mA
- Weight : 7.5 Kg (Approx.)
- Size (mm) : 410 (L) x 355 (W) x 155 (H)



400 W Vessel Sealer Electrosurgical Cautery Machine

- Use in Bipolar SALINE TURP Procedures
- Used in Underwater Cutting
- Vessel Fusion with permanent Fuses
- Sealing with no sticking and charring
- Fuses Vessels upto 7mm in diameter.
- 4 Modes in CUT - Pure,Blend1,Blend2,Endocut
- 4 Modes in COAG - Spray,Force,Fulgurate,Desiccate
- 4 Modes in BIPOLAR- Micro,Macro,Cut,Auo-Mode
- Microprocessor controlled Electrosurgical unit
- Bode protected and cardiac protected design
- Patient Plate Fault Monitoring system
- Handswitch and Footswitch Operation
- High Frequency - 400W
- Minimum RF Distortion ; User settable program modes
- HF Leakage current > 150mA
- Weight : 7.5 Kg (Approx.)
- Size (mm) : 410 (L) x 355 (W) x 155 (H)



FULL HD LAPAROSCOPES

ESC
MEDICAMS

Full HD Wide View Laparoscope 1080p

- High Definition Laparoscopy Optics.
- Diameter : 10mm, 5mm
- Length: 300 mm.
- Viewing Angle : 30 Degree, 0 Degree
- Sharp Detailing and easy focus
- Adopt high quality stainless steel material
- German optic glass, light fiber & light cone
- Sapphire cover for lens, never abrasion
- High depth of focus



ANTI REFLECTION
WIDE VIEW LENS

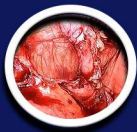


STORZ COMPATIBLE
LIGHT PORT



HIGH LIGHT
TRANSMISSION

1080p
FULLHD



HIGH DEFINITION IMAGE

The HD Laparoscopes have been optimized to deliver excellent contrast and high resolution. The true colour HD lens system allows for definition and clarity of finest structures in the entire endoscopic field. This effect is emphasized by the homogenous light distribution



HIGH DURABILITY

The three tube construction of telescopes increases the durability. Superior long-term autoclavability in addition to washer/disinfecter compatibility contributes to a high mechanical durability..



WIDE VIEW

HD laparoscopes come in a full complement in direction of view as well as traditional and reversed light post options.