

ESC[®]

MEDICAMS

PRODUCT BROCHURE

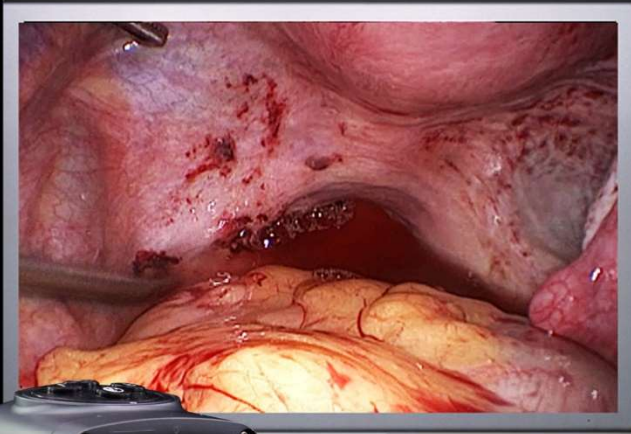


www.escmedicams.com

info@escmedicams.com



FHD-LP-5000



BIGGER SENSOR

DETAILED IMAGE

Experience superior quality high definition imaging with wider & bigger Sony exmor Sensor with size 1/1.8" allowing more light to enter into camera and producing detailed and sharp images.

CLICK & RECORD

FULL HD VIDEOS

Record high definition videos directly into USB drive with Record & Snapshot buttons

4K LENS

ANTI-REFLECTION COATING

Clear waterproof optics designed to adapt with all types of Rigid Endoscope

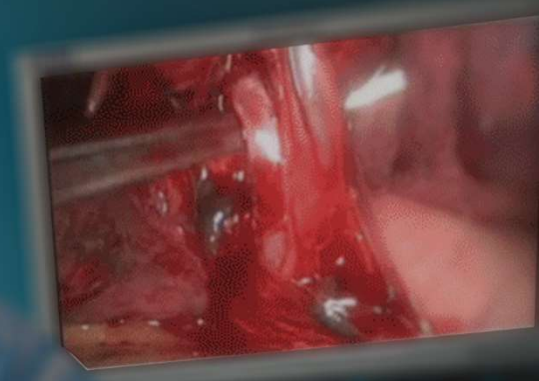


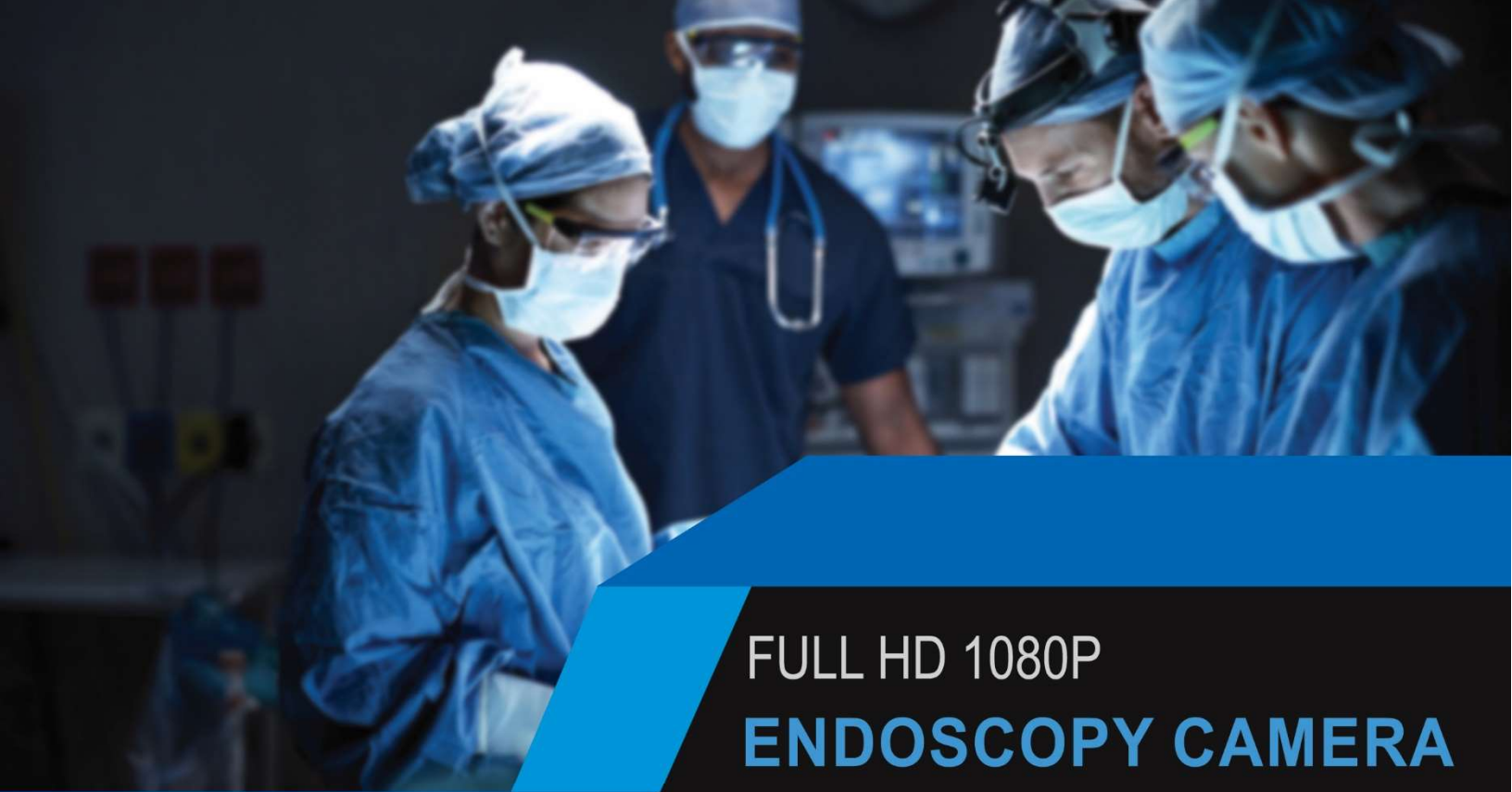


FHD-LP-5000

SPECIFICATIONS

- Premium Resolution 2.4 Megapixel (1920 x 1080p)
- Sony 1/1.8" Wider Ex-Mor CMOS Sensor
- Full HD Recording directly into USB Drive
- High Sensitive Sensor for better clarity even in low light.
- One press Recording button on camera head.
- New 4K Optics for Higher Depth of Field
- Output : 1 HDMI , 1 SDI
- Low Delay Realtime 60 Fps Smooth imaging
- 5x Zoom Button on Control Unit
- IP8X Waterproof design
- Low Pass Filter for High Contrast imaging
- Anti-Moire Feature for Flexible scopes
- Low heat emission
- One Press Freeze button on camera head
- High color accuracy with intelligent white balance
- Premium design light weight camera head





FULL HD 1080P ENDOSCOPY CAMERA WITH INBUILT RECORDER



Wider 1/1.9" Sony Sensor

Bigger Full HD Sensor for more detailed image as compared to conventional 1/3" Sensor in normal cameras. Higher sensitivity provides noise free images even in low light.



Direct USB Recording

Capture all the videos and snapshot in full hd resolution directly into pen drive plugged into control unit via remote or front panel.



Anti Reflection 4k Optics

High resolution imported optics to provide sharper image without any glare from the liquids.



Zero Delay 60 Fps Video

Live imaging with 60 frames per second prevents any delay in the video making it best suitable for surgical purpose.





FHD-LP-4000R

SPECIFICATIONS

- Premium Resolution 2.4 Megapixel (1920 x 1080p)
- Sony 1/1.9" Ex-Mor CMOS Sensor
- Full HD Recording directly into USB Drive
- Recording Resolution :- Full HD 1080p @ 60 Fps
- Recording Mode :- In USB Drive
- Snapshot and recording via remote control
- Output : 1 HDMI , 1 SDI
- Low Delay Realtime 60 Fps Smooth imaging
- 5x Zoom Button on Control Unit
- IP8X Waterproof design
- Special medical grade filter on camera sensor
- Low heat emission
- One Press Freeze button on camera head
- High color accuracy with intelligent white balance
- New Anti-reflective coated german glass HD lens
- Premium design light weight camera head

FEATURES

- Latest Sony HD CMOS Sensor
- Sensor : 1/2.8" Sony 720p
- Resolution : 1.2 Megapixel
- Waterproof and Anti-Reflection Lens
- Freeze Button on the camera head
- Connect to PC/Laptop and record files using Software
- Digital 5x Zoom for in-depth view.
- Adjustable Brightness and Colors
- Support all Rigid Endoscope and storz flexible scopes.
- Waterproof and dustproof camera head
- Control unit Dimensions : 220 * 275 * 80 mm.

Detailed Images with Latest HD Sensor

Connect to Laptop to take printout

Powerful zoom for in-depth view

High Color Accuracy

ESC-HD3100

High Definition 1.2 MP Endoscopy Camera



Combo Unit 2 in 1



HD3100-LED

Portable Endoscopy Camera with Inbuilt LED Light Source

- Latest Sony HD CMOS Sensor
- Sensor : 1/2.8" Sony 720p
- Resolution : 1.2 Megapixel
- High Power : 60 Watt
- Illumination : > 2,000,000 Lux
- LED Life Span : 40,000 Hours +
- Waterproof and Anti-Reflection Lens
- Freeze Button on the camera head
- Connect to PC/Laptop and record files using Software
- Digital 5x Zoom for in-depth view.
- Adjustable Brightness and Colors
- Support all Rigid Endoscope and storz flexible scopes.
- Waterproof and dustproof camera head
- Control unit Dimensions : 220 * 275 * 80 mm.



High Power 80 Watt LED

Bright LED Light Source sufficient for OPD or minor surgical applications.



High Definition

Highly Detailed image with Latest Exmor Sensor from Sony

COLD LED LIGHT SOURCE

ESC
MEDICAMS

Powerful Illumination 120 Watt Cold LED Light Source w/ 3.5" Touchscreen

- Cost Effective LED Technology
- High Power : 120 Watt
- Illumination : > 4,000,000 Lux
- LED Life Span : 50,000 Hours +
- Optimum Color Rendering
- Lightweight and compact design
- Light output suitable for diagnostic & surgery
- Constant Light Intensity over lifetime
- Low Energy consumption
- Dual Fan for Heat Control



HIGH POWER
120
WATT



Mini 80 Watt Portable Cold LED Light Source

- Cost Effective LED Technology
 - High Power : 80 Watt
 - Illumination : > 2,000,000 Lux
- LED Life Span : 40,000 Hours +
 - Constant Color Temperature
 - Color Rendition Index (CRI) :- 75
- Constant Light Intensity over lifetime
 - Low Energy consumption
- High brightness, Noise-free imaging
- Compact Design : 160*180*80 cm
 - Fan for Efficient Heat Control
 - Input Voltage : AC110~250V



80
WATT



COMPACT
DESIGN

PORTABLE USB ENDOSCOPE

ENT-2000P-USB

Features

- Resolution : 1.2 Megapixel
- Sensor : 1/3" Sony CCD Sensor
- Horizontal Resolution : 700 TV Lines
- Record Videos & Take Snaphots directly into PC
- Plug n play design, no need for power adapter
 - Camera Cable Length : 3 Meters
 - Focal Length : 25 mm.
- Output : RC Video Output for TV / USB for PC
 - White Balance :- On Camera Head
- Software provided to capture videos and photos
 - Connect to PC or Laptop
- Power input to camera : DC 12 Volt , 1 Ampere
 - Lens mount : C-Mount
 - Fits all rigid endoscopes

3 in 1 Connectivity



Connect to
Windows or Mac



Connect to
Android



Connect to
TV Directly

COLD LED
**PORTABLE 10W
LIGHT SOURCE**
WITH DUAL BATTERY



**DIRECT MICRO USB QUICK
CHARGING PORT**

Micro USB Port for hassle free
charging through power bank,
PC or Charger



**HIGH POWER 10 WATT
COLD LED LIGHT**

High Illumination LED to fit
all rigid endoscopes for all
purposes like ENT



**REPLACEABLE BATTERY
WITH LONG LIFE**

Comes with easily replaceable
dual battery



WIRELESS LED HEADLAMP

ESC
MEDICAMS

10 Watt ENT LED Wireless Headlamp



- High Power LED :- 10 Watt
- Mini portable wireless design
- High Illumination :- 1,10,000 lux
- Battery :- Rechargeable Li-Ion
 - Bulb Life :- 50000 Hours
 - Color Temperature :- 5700k
- Working Hour per charge:- 4 Hours
 - Charging time :- 1.5 Hour
 - Light Intensity :- Adjustable
- Light Spot Size:- Adjustable/Fix (Optional)
- Weight : 0.37 Grams Approx
 - Extra Battery Optional
 - CRI <= 90

Surgical LED Wireless Headlamp 10 Watt 3.5x Loupe

- High Power LED :- 10 Watt
- Extremely Light Weight design
- Magnification : 3.5x
- High Illumination :- 1,10,000 lux
- Battery :- Rechargeable Li-Ion
- Bulb Life :- 50000 Hours
- Color Temperature :- 5700k
- Working Hour per charge:- 4 Hours
- Charging time :- 1.5 Hour
- Light Intensity :- Adjustable
- Light Spot Size :- Adjustable
- Weight : 0.4 Grams Approx.
- Extra Battery Optional
- CRI <= 90





FULL HD MEDICAL RECORDER

Full HD 1080P Portable Medical Recorder w/ 3.5" Screen

MODEL : ESC-365R



- Direct Recording into SD Card with speed upto 22Mbps
- Pause Recording while recording live videos and continue the same file
- Take snapshot while recording videos
- Playback the recorded videos directly into recorder
- Connect to MAC, Windows OS to view files
- Recording Resolution: 1080p@60fps
- Direct Camera Input (Cable Provided)
- One-touch recording button
- Full HD 1080P Recording
- Input : HDMI input
- Output : Enhanced HDMI output to view files on big screen



ESC-265R

- Support Direct USB Pen Drive for recording and snapshot
- Enhanced HDMI Output
- Recording Resolution: 1080p@60fps
- High Quality Recording 16Mbps@1080p30fps
- Direct Camera Input (Cable Provided)
- One-touch recording and snapshot button
- Direct Onboard Snapshot and Record Buttons
- Input : BNC Composite Video input / HDMI
- Fully Metal Body for long life

ESC-165R

- Support Direct USB Pen Drive for recording and snapshot
- Recording Resolution: 1080p@60fps
- Direct Camera Input (Cable Provided)
- Dimensions(L*W*H) :- 142*73*26 mm
- Snapshot and record through remote
- Full HD 1080P Recording
- Weight : 110 grams
- No need PC, Playback through recorder only



Co2 INSUFFLATOR & CAUTERY

ESC
MEDICAMS

30 Litres CO2 Insufflator

- 30L Insufflators Precise control of pressure/flow Parameters
- Inbuilt gas warmer provides warm results minimizing fogging
- Over pressure alarm & pressure release systems – help assure patient safety.
- Continuous flow provides easy procedures
- Advance high speed microcontroller technology
- Greater accuracy & measurement of Co2
- Reduce Nursing attention
- Automatic overpressure gas release
- Insufflation Pressure :- 3-25 mm Hg
- Gas Connection :- UNF 7/16”
- Input Pressure :- 3 Bar Min.
- Output Connection :- 9 - 10 mm ID Tube
- Flow Rate Setting :- 1 to 30 Ltrs / Min



400 W High Frequency Electrosurgical Cautery Machine

- Use in Monopolar & Bipolar TURP Procedures
- 4 Modes in CUT - Pure, Blend1, Blend2, Endocut
- 4 Modes in COAG - Spray, Force, Fulgurate, Desiccate
- 4 Modes in BIPOLAR- Micro, Macro, Cut, Auto-Mode
- Microprocessor controlled Electrosurgical unit
- Bode protected and cardiac protected design
- Patient Plate Fault Monitoring system
- Handswitch and Footswitch Operation
- High Frequency - 400W
- Minimum RF Distortion
- User settable program modes
- HF Leakage current > 150mA
- Use with Saline Water (0.9% NaCl)
- Advanced Procedure for TURP

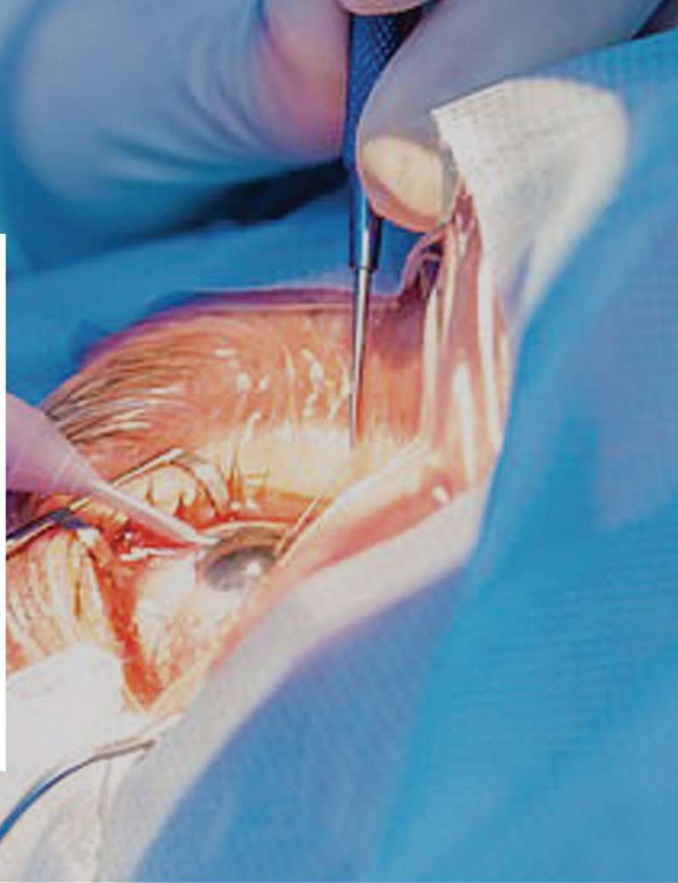


MICROSCOPE CAMERA

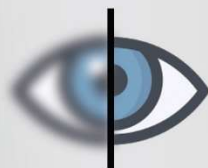
MODEL : SRG-HD-2385X

CAPTURE & RECORD MICROSURGERY

PROCEDURES WITH INDEPTH DETAILS



SONY
Exmor R
CMOS Sensor



HDR

BIGGER WIDER SENSOR

Sony Exmor 1/1.9" CMOS Sensor to capture detailed image with high sensitivity

SHARP SURGICAL DETAILS

Capture minute details at 60 frames per second with greater clarity

HIGH DYNAMIC RANGE

Wider range of contrast to capture surgical images with greater realism

- Resolution : 1920*1080p
- Sensor : 1/1.9" Sony Exmor Cmos Sensor
- Output Format : Full HD 60Fps
- Output : HDMI.& USB
- Mount Type : C-Mount Type
- Recording Device : SD Card
- Snapshot Resolution : 1920*1080p
- High Dynamic Range (HDR)
- White Balance : Manual / Automatic
- Brightness, Colors : Adjustable
- Remote Control for Recording & Snapshot
- Diameter of the Mount Thread : 25.4 mm



16 Megapixel 1080p Full HD HDMI Microscope Camera with SD Card Recording Model : HDMICAM-16mp

- Sensor: 1/2.5" 16 Megapixel Korean HD Sensor
- High Resolution HDMI Output - 1080P @ 60 fps
- Support Image Freeze , AWB, 5x Digital Zoom
- Support Memory Card for Video Recording and Pictures storing
- Operation through Remote Control or Buttons
- View Cross Hair Cursor Display
- IR Remote Control Provided
- Adjustable Brightness, Colors, Saturation
- Output:- HDMI Direct , USB2.0
- Support Horizontal and Vertical Line Display



13 Megapixel Compact Mini HDMI Microscope Camera with SD Card Recording Model : HDMICAM-13mp

- Sensor:- 1/3" HD CMOS Sensor
- Resolution:- Full HD 1080P @ 30 fps
- Pixel size: 1.335 μm \times 1.335 μm
- Support TF Card Recording and Snapshot
 - One Key Freeze function
- Support Manual White Balance
 - Support Digital Zoom
- Support scale measurement lines
 - Crosshair display
- Special exposure control for light adjustment
- Support Operation through remote control
- Size :- 43 * 43 * 58 mm., Weight :- 140 grams



HDSDI Technology
FULL HD 1080P 60FPS

OPERATING MICROSCOPE CAMERA

SRG-HD-3385X

EYE CATCHING TECHNOLOGY

- Resolution : Full HD 1920*1080p
- Sensor : 1/1.8" Sony Exmor HDR Sensor
- High Sensitive Sensor
- Deeper Field of view for in-depth details
- Output Format : Digital SDI 60Fps
- Output : SDI & Video Output
- Mount Type : C-Mount Type
- High Dynamic Range (HDR)
- White Balance : Manual / Automatic
- Brightness, Colors : Adjustable
- Remote Control for Recording & Snapshot
- Diameter of the Mount Thread : 25.4 mm
- Dimensions: 38*38*48.8 mm

SONY
Exmor R
CMOS Sensor

HDSDI
High Definition Serial Digital Interface



FULL HD ENDOSCOPES



**ANTI REFLECTION
WIDE VIEW LENS**



**STORZ COMPATIBLE
LIGHT PORT**



**HIGH LIGHT
TRANSMISSION**

Full HD Laparoscope

- 0 & 30 Degree Full HD Sinuscope.
- Dimensions: 10 mm /5 mm,Length: 300 mm
- Sharp Image Quality
- Adopt high quality stainless steel material
- German optic glass,light fiber and light cone
- Anti-Fogging Coating
- Temperature of 134°C/273° F for sterilization

Full HD Sinuscopes

- 0 / 30 / 70 Degree Full HD Sinuscope.
- Dimensions : 2.7 mm / 4 mm,
- Length: 100 mm /175 mm
- Adopt high quality stainless steel material
- German optic glass,light fiber and light cone
- Sapphire cover for lens,never abrasion
- High depth of focus

Full HD Cystoscopes

- 30 Degree Full HD Cystoscopes.
- Dimensions : 4 mm,
- Length: 300 mm
- Improved image and light transfer
- German optic glass,light fiber and light cone
- Sapphire cover for lens,never abrasion
- Temperature of 134°C/273° F for sterilization

Full HD Arthroscopes

- 30 Degree Full HD Sinuscope.
- Dimensions : 2.7 mm / 4 mm,
- Length: 100 mm /175 mm
- Sharper Image Quality
- German optic glass,light fiber and light cone
- Sapphire cover for lens,never abrasion
- Lesser reflection with anti reflection coating



SUCTION IRRIGATION PUMP

16 Megapixel 1080p Full HD HDMI Microscope Camera with SD Card Recording Model : HDMICAM-16mp

The ESC Medicams Hysteroscopy Laparoscopy Pump 1000 is a suction and irrigation pump dedicated to laparoscopic surgeries. The optimum adjustment of pressure and flow parameters allows for effective tissue rinsing and effective aspiration of fluid during laparoscopic procedures.

The system is equipped with high pressure and fluid capacity for faster and improved visibility in the proven wash mode and more flexibility in application. The intelligent fluid management system controls everything. Short response times if the pressure goes up or down. Automated and prompt pressure reduction if intra-articular pressure is elevated.



- Minimally invasive technique of transporting fluid to and from a surgical site.
- SELF TEST AUTOMATICALLY on power at 100mmHg, 200mmHg, 300mmHg, 400mmHg.
- Best in class Piezo Pressure Sensor.
- Dedicated Priming Control.
- Fluid flow rate management.
- Fast and more accurate pressure control.
- Large numerical and symbolic display of intra-cavity pressure.
- Disposable tubings D EHP-free.
- Non-Disposable sterilizable tubings.
- Acoustic and visual warning in case of incorrect tubing placement
- Remote control option
- Autonomous suction and irrigation channels
- Irrigation based on the peristaltic pump module
- Suction based on the high quality vacuum pump module
- Predefined suction and irrigation parameters

TECHNICAL SPECIFICATIONS

- Flow 0.01 to 1.0l/min
- Pressure 50 to 400 mmHg
- Suction 0.65 bar
- Control : Touch screen
- Complies with medical EMC standard
- Class 1 Equipment
- Water Ingress Protection , IPX0 - Ordinary
- Equipment Size : 310*120*330 mm.
- Weight : 7 Kg
- Electrical : Primary: 100-240 VAC , 50/60 Hz,
- Power Rating 150 VA , Fuses : Two
- Environment:-
- Operating Condition : 5-40°C
- Relative Humidity : 30-95%
- Transportation and Storage : - 20°C to 60°C ,
- 10%-
- 75% Relative humidity 700-1060 hpa

OT LIGHT CAMERA

ESC
MEDICAMS

Full HD 1080p HDSDI AutoFocus OT Light Camera

Model : HSZ-HB20W

- Resolution : 2.1 Megapixel
- Sensor : Sony Exmor CMOS
- High Sensitivity against bright light
- High Speed Autofocus Motor
- Output Format : Full HD 1080p
- Output : HD-SDI, CVBS, AHD
- Effective Pixels : 1945 (H) * 1109 (V)
- 20x High Speed Optical Zoom
- White Balance : Auto / Manual
- Dimensions : 60*60*115 mm



HDSDi
High Definition Serial Digital Interface

SONY
Exmor R
CMOS Sensor

 High Speed
Autofocus

High Resolution HD Autofocus OT Light Camera with Remote

Model : OTCAM-2136HD

- Resolution : 2 Megapixel
- Pixels : 1200 TV Lines
- Sensor : 1/3" Sony CMOS Sensor
- Output : Video BNC Output
- Zoom : 20x Optical Zoom
- Brightness : Adjustable
- Remote : Adjust Zoom & Focus
- Focal Length : f5.7 ~f102 mm
- White Balance : Auto/Manual
- Focus : Auto / Manual
- Power : DC 12 Volt
- Dimensions : 60*58*115 mm





REACH

90+ COUNTRIES

CUSTOMER BASE

2000+

CONTACT US

ESC Medicams

Address : 157, Old Lajpat Rai Market,
Chandni Chowk,
Delhi - 110006, India.

Phone : +91-9818100144,
+91-8882664945 (Rohit Verma)
+91-8882441190 (Mohit Verma)
011-23866777 / 23860278

Email ID : info@escmedicams.com
sales01@escmedicams.com

Website : www.escmedicams.com