

**ESC**<sup>™</sup>  
MEDICAMS

**10 WATT**

PORTABLE WIRELESS  
**LED HEADLIGHT**



# High Power 10W LED Headlight



## High Power LED

10 W high power LED emit up to  
1,10,000 Lux illuminance



## Ergonomic Design

Detachable forehead cushion and multiple adjustment  
headband



## Integration Design

100% freedom of movement with cable free intergrated  
battery



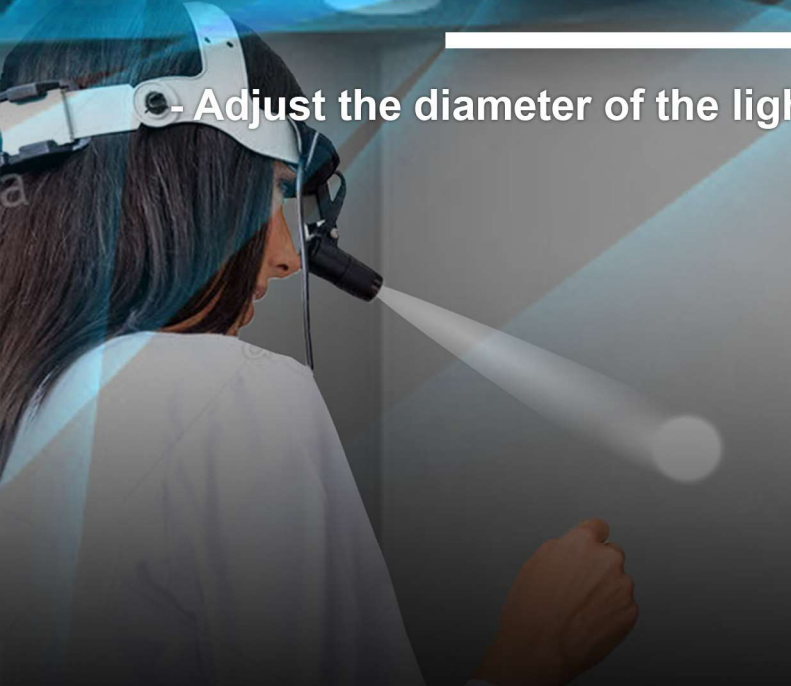
## Optic Technology

Precision optical system consisting  
of 4 multi-coated lenses



## ADJUSTABLE LIGHT SPOT SIZE (Optional)

- Adjust the diameter of the light spot with Focus Knob on light head



## HIGH CRI VALUE OF LED SUPERB COLOR QUALITY WITH HIGH CONTRAST

- Higher the Color Rendition Index (CRI), Better is the LED

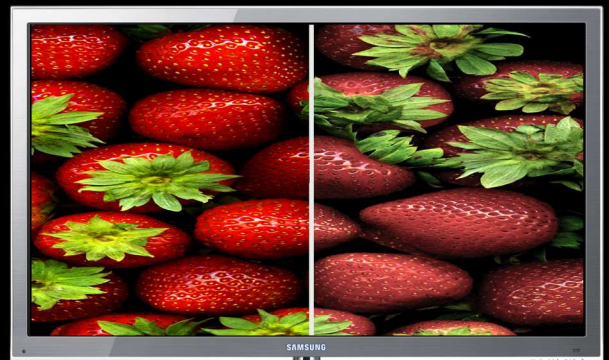
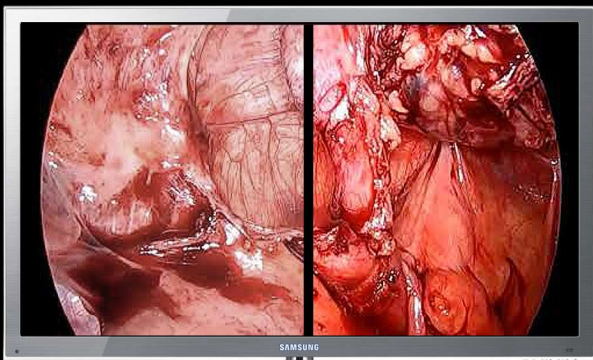
- High CRI Value produce better color

CRI - 70  
POOR LED

CRI - 90  
GOOD LED

CRI - 90  
GOOD LED

CRI - 70  
POOR LED



## SPECIFICATIONS

- High Power LED :- 10 Watt
- Mini portable wireless design
- High Illumination :- 1,10,000 lux
- Battery :- Rechargeable Li-Ion
- Bulb Life :- 50000 Hours
- CRI <= 90
- Color Temperature :- 5700k
- Working Hour per charge:- 4 Hours
- Charging time :- 1.5 Hour
- Light Intensity :- Adjustable
- Light Spot Size :- Adjustable / Fixed (Optional)
- Voltage :- DC3.7 Volt
- Extra Battery Optional



# WIRELESS LED HEADLAMP

**ESC**  
MEDICAMS

## *Surgical LED Wireless Headlamp 10 Watt 3.5x Loupe*



- High Power LED :- 10 Watt
- Extremely Light Weight design
  - Magnification : 3.5x
- Loupe Working Distance : 280 ~ 320mm
- High Illumination :- 1,10,000 lux
- Battery :- Rechargeable Li-Ion
  - Bulb Life :- 50000 Hours
  - Color Temperature :- 5700k
- Working Hour per charge:- 4 Hours
  - Charging time :- 2.5 Hour
- Light Intensity :- Adjustable
- Light Spot Size :- Adjustable
  - Weight : 0.4 Kg Approx
  - Extra Battery Optional
  - CRI <= 90



**MULTILAYER  
OPTICS**



**HIGH POWER LED  
WITH 10 WATT**



**ADJUSTABLE LIGHT  
SPOT SIZE**



**LIGHTWEIGHT  
DESIGN**

