

ESC[®]
MEDICAMS

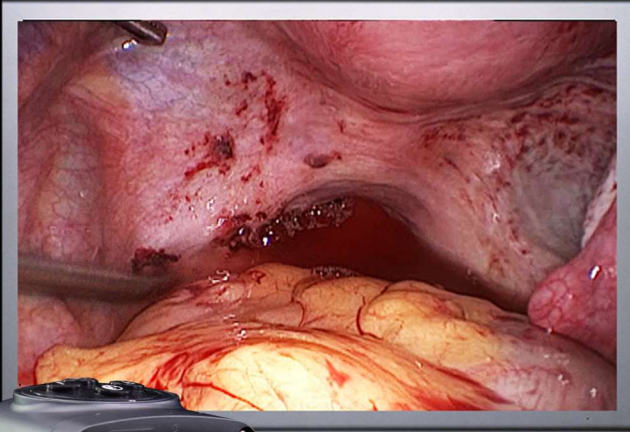


FHD-LP-5000

Let's make it visible



FHD-LP-5000



BIGGER SENSOR

DETAILED IMAGE

Experience superior quality high definition imaging with wider & bigger Sony exmor Sensor with size 1/1.8" allowing more light to enter into camera and producing detailed and sharp images.

CLICK & RECORD

FULL HD VIDEOS

Record high definition videos directly into USB drive with Record & Snapshot buttons

4K LENS

ANTI-REFLECTION COATING

Clear waterproof optics designed to adapt with all types of Rigid Endoscope





FHD-LP-5000

VERSATILE

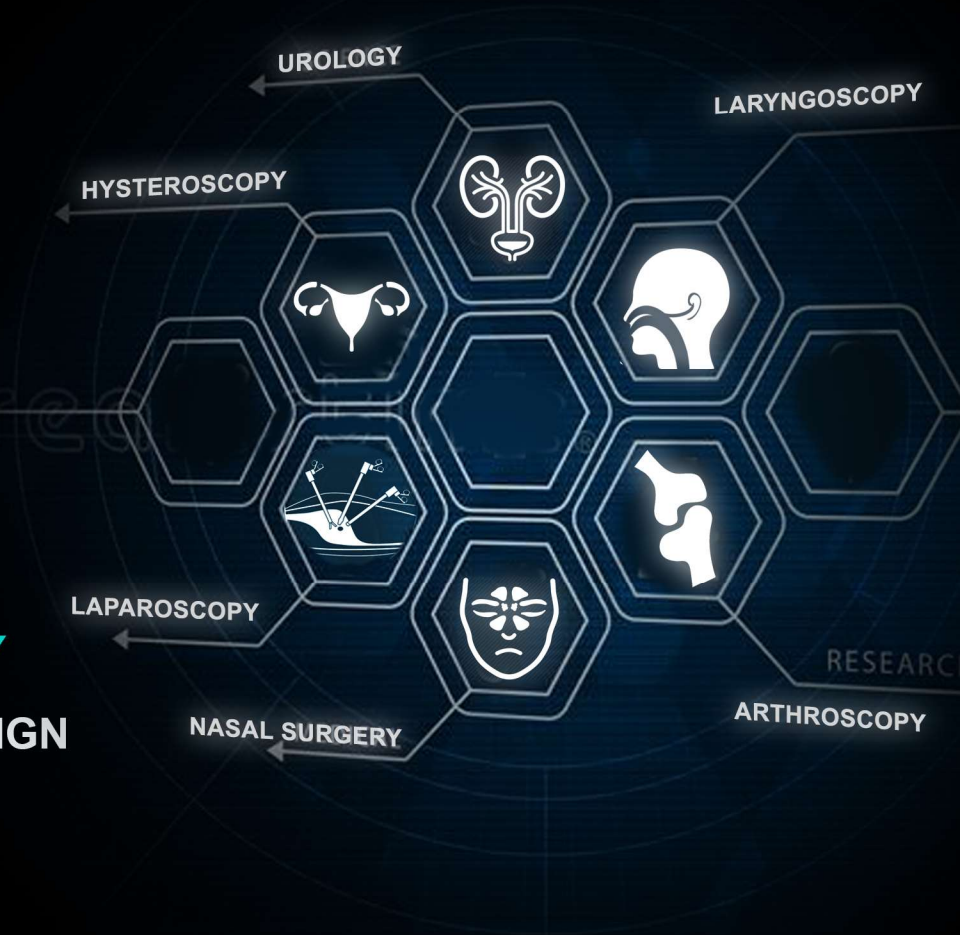
ONE CAMERA, MULTIPLE USAGE

Different types of Surgery & applications can be selected from the camera menu.

HIGH DURABILITY

LOW MAINTENANCE DESIGN

Durable and easily replaceable circuit design.





FHD-LP-5000

SPECIFICATIONS

Model	FHD-LP-5000	
Signal System	PAL	NTSC
Image Sensor	1/1.8" Sony Exmor HDR Sensor	
Total Pixels	2000 (H) x 1241 (V) approx. 2.48M pixels	
Unit Cell Size	3.75 μm (H) x 3.75 μm (V)	
Scanning Frequency	H: 15.625 KHz / V: 50 Hz	H: 15.734 KHz / V: 59.94 Hz
Frame Rate	50 Fps @ 1080p	60 Fps @ 1080p
Sensor Resolution	2.13 Megapixel 1080p	
Effective Pixels	1945 (H) x 1097 (V) approx. 2.13M pixels	
Focal Length of Lens	4k 22mm / 28mm Lens	
Gain Control (AGC)	0 - 10 Steps	
Brightness Control	0 - 20 Steps (Adjust according to light source intensity)	
Output	1 HDMI , 1 3G-SDI , 1 Video BNC Output , 1 DVI (Optional)	
Input	1 USB Input (Upto 128 GB Pen Drive) 1 PC Input (Windows)	
Recording Resolution	1080p Full HD @ 60 fps	
Snapshot Resolution	1920 x 1080 Pixels	
Digital Zoom	1x- 10x	
Recording Mode	Via USB Pen Drive	
Min. System Requirement for PC	OS : Windows 7,8,10 , Ram : 16 Gb , Intel i5 / i7 , Memory : 512 Gb , Graphics: 2 Gb	
Sharpness	0-10	
Color	0-10	
White Balance	PUSH LOCK	
Camera Cable Length	3 Meters Ultra Soft Silicon Cable	
HDMI Cable Length	3 Meters High Speed Cable	
Power Cable Length	1 Meter	
Supported Endoscope	Rigid Endoscopes / Flexible Endoscope (Optional)	
Supported Light Source	Work best with LED Light Source	
Power Voltage	12VDC (Camera Head) , AC110V-240V (Control Unit)	
Power Consumption	Max. 2W / 170mA	
Operating Temperature	-10°C ~ +50°C	
Operating Humidity	30% ~ 80% RH	
Dimensions	317 (L) x 242(W) x 90 (H) mm. (Control Unit) , Ø 42 mm. x 92 mm. (Camera Head)	
Weight (Net)	Approx. 3225 g. (Control Unit) , Approx. 150 g. (Camera Head without Cable and lens)	